



ELK Biotechnology

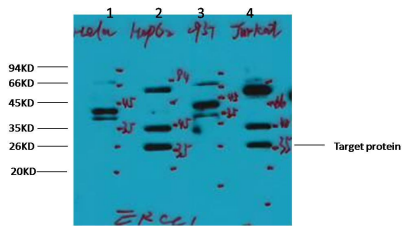
ERCC1 Mouse mAb

Catalog NO.: EM1078

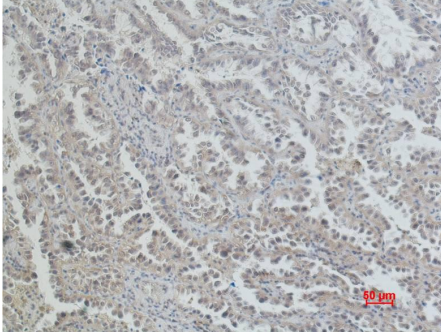
For research use only.

Overview

| | |
|-----------------------|---|
| Product name | ERCC1 Mouse Monoclonal antibody |
| Source | Mouse |
| Applications | WB IHC |
| Species reactivity | Human |
| Recommended dilutions | WesternBlot:1/1000 Immunohistochemistry:1/100-200 NOTE: Optimal dilutions should be determined by the end user. |
| Immunogen | Synthetic Peptide |
| Species | Human |
| Storage | PBS with 0.02% sodium azide and 50% glycerol pH 7.4. Store at -20° C. Avoid repeated freeze-thaw cycles. |
| Isotype | IgG1 |
| Clonality | Monoclonal |
| Concentration | 1 mg/ml |
| Observed band | 36kDa |
| GenelD (Human) | 2067 |
| Human Swiss-Prot No. | P07992 |
| Cellular localization | Nucleus |
| Alternative Names | COFS4 UV20 |
| Background | The function of the ERCC1 protein is predominantly in nucleotide excision repair (NER) of damaged DNA. NER is one of five separate DNA repair mechanisms that also include recombination repair base excision repair mismatch repair and translesion synthesis. |



Western blot analysis of) HeLa 2) HepG2 3) 293T 4) Jurkat with ERCC1 Mouse mAb diluted at:2000.



Immunohistochemical analysis of paraffin-embedded Human Lung Carcinoma using ERCC1 (EM1078) Mouse mAb diluted at:200.