



# Recombinant Mouse CD5 (C-6His)

<b>Catalog #</b>	EPT051
<b>Expression Host</b>	Human Cells
<b>DESCRIPTION</b>	Recombinant Mouse T-Cell Surface Glycoprotein CD5 is produced by our Mammalian expression system and the target gene encoding Gln24-Asn370 is expressed with a 6His tag at the C-terminus.
<b>Accession</b>	P13379
<b>Synonyms</b>	T-cell surface glycoprotein CD5; CD5; CD5 antigen; CD5 antigen (p56-62); CD5 molecule; LEU1T-cell surface glycoprotein CD5; Lymphocyte antigen T1;Leu-1; T1; Ly-1
<b>Mol Mass</b>	38.9 KDa
<b>AP Mol Mass</b>	42-58 KDa, reducing conditions
<b>Purity</b>	Greater than 95% as determined by reducing SDS-PAGE.
<b>Endotoxin</b>	Less than 0.1 ng/μg (1 EU/μg) as determined by LAL test.
<b>FORMULATION</b>	Lyophilized from a 0.2 μm filtered solution of PBS, pH





7.4.

## RECONSTITUTION

Always centrifuge tubes before opening. Do not mix by vortex or pipetting.

It is not recommended to reconstitute to a concentration less than 100 $\mu$ g/ml.

Dissolve the lyophilized protein in distilled water.

Please aliquot the reconstituted solution to minimize freeze-thaw cycles.

## SHIPPING

The product is shipped at ambient temperature.

Upon receipt, store it immediately at the temperature listed below.

## STORAGE

Lyophilized protein should be stored at  $< -20^{\circ}\text{C}$ , though stable at room temperature for 3 weeks.

Reconstituted protein solution can be stored at  $4-7^{\circ}\text{C}$  for 2-7 days.

Aliquots of reconstituted samples are stable at  $< -20^{\circ}\text{C}$  for 3 months.

## BACKGROUND

CD5 is a transmembrane glycoprotein of the conserved scavenger receptor cysteine-rich (SRCR) superfamily and expressed on thymocytes, peripheral T cells and a subset of B cells (B1-a). Moreover, CD5 also was found expressed in small lymphocytic





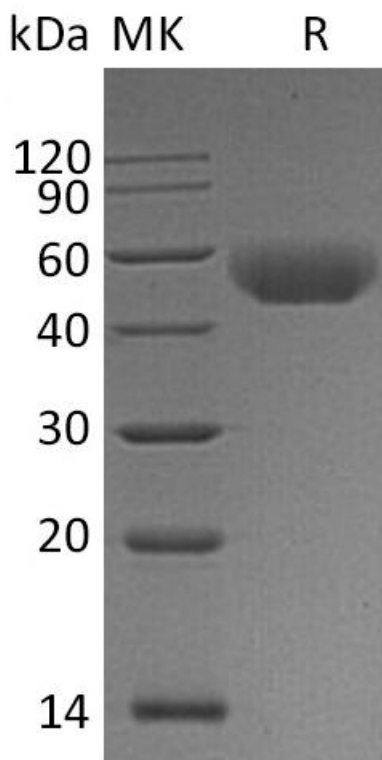
lymphoma, hairy cell leukaemia and mantle cell lymphoma cells. The long cytoplasmic tail of CD5 has no intrinsic enzymatic activity, but contains four tyrosine phosphorylation sites, including an immunoreceptor tyrosine-based (ITAM)-like motif (pseudo-ITAM) and an immunoreceptor tyrosine-based inhibitory (ITIM)-like motif (pseudo-ITIM), as well as multiple potential serine and threonine phosphorylation sites. It physically associates with the T cell antigen receptor (TCR) and B cell antigen receptor (BCR), where it negatively modulates the activation and differentiation signals transduced by these receptors. CD5 also plays an important role in protection from activation-induced cell death and in the recognition of pathogen associated molecular patterns (PAMPS) present on fungal surfaces.





ELK Biotechnology

**SDS-PAGE**



+86-27-59760950

ELKbio@ELKbiotech.com

www.elkbiotech.com

23-2, No.388 Gaoxin 2nd Road, Wuhan East Lake Hi-tech Development Zone, Hubei, P.R.C