



Recombinant Human REG3G (C-6His)

Catalog #	EPT160
Expression Host	Human Cells
DESCRIPTION	Recombinant Human Regenerating Islet-derived Protein 3-gamma is produced by our Mammalian expression system and the target gene encoding Glu27-Asp175 is expressed with a 6His tag at the C-terminus.
Accession	Q6UW15
Synonyms	Regenerating islet-derived protein 3-gamma; REG-3-gamma; Pancreatitis-associated protein 1B;REG3G;PAP-1B;Regenerating islet-derived protein III-gamma
Mol Mass	17.5 KDa
AP Mol Mass	17 KDa, reducing conditions
Purity	Greater than 95% as determined by reducing SDS-PAGE.
Endotoxin	Less than 0.1 ng/μg (1 EU/μg) as determined by LAL test.





FORMULATION

Lyophilized from a 0.2 μm filtered solution of 20mM PB, 150mM NaCl, pH 7.4.

RECONSTITUTION

Always centrifuge tubes before opening. Do not mix by vortex or pipetting.

It is not recommended to reconstitute to a concentration less than 100 $\mu\text{g/ml}$.

Dissolve the lyophilized protein in distilled water.

Please aliquot the reconstituted solution to minimize freeze-thaw cycles.

SHIPPING

The product is shipped at ambient temperature.

Upon receipt, store it immediately at the temperature listed below.

STORAGE

Lyophilized protein should be stored at $< -20^{\circ}\text{C}$, though stable at room temperature for 3 weeks.

Reconstituted protein solution can be stored at $4-7^{\circ}\text{C}$ for 2-7 days.

Aliquots of reconstituted samples are stable at $< -20^{\circ}\text{C}$ for 3 months.

BACKGROUND

Pancreatitis-associated protein IB, Regenerating islet-derived protein III-gamma, is a secreted protein which contains 1 C-type lectin domain. It is expressed almost exclusively in the pancreas and also expressed

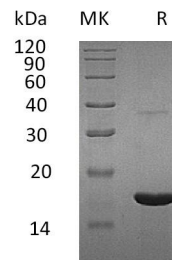




ELK Biotechnology

in testis, but not found in small intestine. This protein might be a stress protein involved in the control of bacterial proliferation.

SDS-PAGE



+86-27-59760950

ELKbio@ELKbiotech.com

www.elkbiotech.com

23-2, No.388 Gaoxin 2nd Road, Wuhan East Lake Hi-tech Development Zone, Hubei, P.R.C