



Recombinant Mouse GH

Catalog #	EPT217
Expression Host	E.coli
DESCRIPTION	Recombinant Mouse Growth Hormone is produced by our E.coli expression system and the target gene encoding Phe27-Phe216 is expressed.
Accession	P06880
Synonyms	Somatotropin; Growth Hormone; Gh1; Gh
Mol Mass	22 KDa
AP Mol Mass	20 KDa, reducing conditions
Purity	Greater than 95% as determined by reducing SDS-PAGE.
Endotoxin	Less than 0.1 ng/μg (1 EU/μg) as determined by LAL test.
FORMULATION	Lyophilized from a 0.2 μm filtered solution of 20mM Tris-HCl, 150mM NaCl, pH 8.0.
RECONSTITUTION	Always centrifuge tubes before opening. Do not mix by vortex or pipetting. It is not recommended to reconstitute to a





concentration less than 100 μ g/ml.

Dissolve the lyophilized protein in distilled water.

Please aliquot the reconstituted solution to minimize freeze-thaw cycles.

SHIPPING

The product is shipped at ambient temperature.

Upon receipt, store it immediately at the temperature listed below.

STORAGE

Lyophilized protein should be stored at $< -20^{\circ}\text{C}$, though stable at room temperature for 3 weeks.

Reconstituted protein solution can be stored at $4-7^{\circ}\text{C}$ for 2-7 days.

Aliquots of reconstituted samples are stable at $< -20^{\circ}\text{C}$ for 3 months.

BACKGROUND

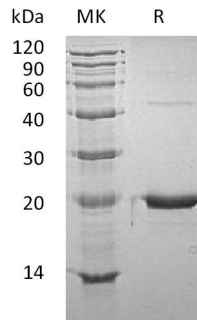
Somatotropin(GH) is a member of the somatotropin/prolactin family of hormones which play an important role in growth control. Its major role in stimulating body growth is to stimulate the liver and other tissues to secrete IGF-1. GH stimulates both the differentiation and proliferation of myoblasts. It also stimulates amino acid uptake and protein synthesis in muscle and other tissues.





ELK Biotechnology

SDS-PAGE



+86-27-59760950

ELKbio@ELKbiotech.com

www.elkbiotech.com

23-2, No.388 Gaoxin 2nd Road, Wuhan East Lake Hi-tech Development Zone, Hubei, P.R.C