



# Recombinant Human CDH16 (C-6His)

<b>Catalog #</b>	EPT249
<b>Expression Host</b>	Human Cells
<b>DESCRIPTION</b>	Recombinant Human Cadherin-16 is produced by our Mammalian expression system and the target gene encoding Pro18-Ala786 is expressed with a 6His tag at the C-terminus.
<b>Accession</b>	O75309
<b>Synonyms</b>	CDH16; Cadherin-16; Kidney-specific cadherin; Ksp-cadherin
<b>Mol Mass</b>	84.4 KDa
<b>AP Mol Mass</b>	90-115 KDa, reducing conditions
<b>Purity</b>	Greater than 75% as determined by reducing SDS-PAGE.
<b>Endotoxin</b>	Less than 0.1 ng/μg (1 EU/μg) as determined by LAL test.
<b>FORMULATION</b>	Lyophilized from a 0.2 μm filtered solution of 20mM PB, 150mM NaCl, pH 7.4.
<b>RECONSTITUTION</b>	Always centrifuge tubes before opening. Do not mix by





vortex or pipetting.

It is not recommended to reconstitute to a concentration less than 100µg/ml.

Dissolve the lyophilized protein in distilled water.

Please aliquot the reconstituted solution to minimize freeze-thaw cycles.

## SHIPPING

The product is shipped at ambient temperature.

Upon receipt, store it immediately at the temperature listed below.

## STORAGE

Lyophilized protein should be stored at  $< -20^{\circ}\text{C}$ , though stable at room temperature for 3 weeks.

Reconstituted protein solution can be stored at  $4-7^{\circ}\text{C}$  for 2-7 days.

Aliquots of reconstituted samples are stable at  $< -20^{\circ}\text{C}$  for 3 months.

## BACKGROUND

Cadherin-16(CDH16) is a single-pass type I membrane protein which contains six cadherin domains. Mature cadherin proteins consist of a large N-terminal extracellular domain, a single membrane-spanning domain, and a small highly conserved C-terminal cytoplasmic domain. Cadherins are calcium-dependent cell adhesion proteins and may





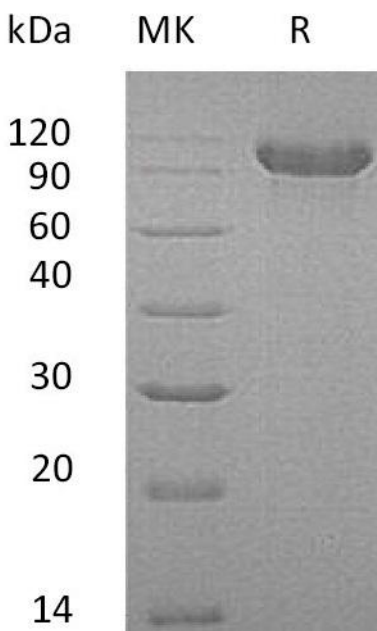
contribute to the sorting of heterogeneous cell types. They preferentially interact with themselves in a homophilic manner in connecting cells. Three calcium ions are usually bound at the interface of each cadherin domain and rigidify the connections, imparting a strong curvature to the full-length ectodomain. CDH16 is exclusively expressed in kidney, where the protein functions as the principal mediator of homotypic cellular recognition. It plays a role in the morphogenic direction of tissue development. CDH16 is composed of an extracellular domain containing 6 cadherin domains, a transmembrane region and a truncated cytoplasmic domain. However, it lacks the prosequence and tripeptide HAV adhesion recognition sequence typical of most classical cadherins.





**ELK Biotechnology**

**SDS-PAGE**



+86-27-59760950

ELKbio@ELKbiotech.com

www.elkbiotech.com

23-2, No.388 Gaoxin 2nd Road, Wuhan East Lake Hi-tech Development Zone, Hubei, P.R.C