



Recombinant Human ACE-2 (C-mFc)

Catalog #	EPT272
Expression Host	Human Cells
DESCRIPTION	Recombinant Human Angiotensin-Converting Enzyme 2 is produced by our Mammalian expression system and the target gene encoding Gln18-Ser740 is expressed with a mFc tag at the C-terminus.
Accession	Q9BYF1
Synonyms	Angiotensin-Converting Enzyme 2; ACE-Related Carboxypeptidase; Angiotensin-Converting Enzyme Homolog; ACEH; Metalloprotease MPROT15; ACE2
Mol Mass	110 KDa
AP Mol Mass	110-140 KDa, reducing conditions
Purity	Greater than 95% as determined by reducing SDS-PAGE.
Endotoxin	Less than 0.1 ng/μg (1 EU/μg) as determined by LAL test.
FORMULATION	Supplied as a 0.2 μm filtered solution of 20mM Tris-HCl, 300mM NaCl, 1mM ZnCl ₂ , 10%





Glycerol, pH 7.4.

RECONSTITUTION

SHIPPING

The product is shipped on dry ice/polar packs.

Upon receipt, store it immediately at the temperature listed below.

STORAGE

Store at $\leq -70^{\circ}\text{C}$, stable for 6 months after receipt.

Store at $\leq -70^{\circ}\text{C}$, stable for 3 months under sterile conditions after opening.

Please minimize freeze-thaw cycles.

BACKGROUND

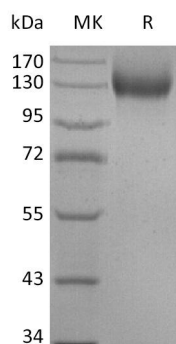
Angiotensin-Converting Enzyme 2 (ACE-2) is an integral membrane protein and a zinc metalloprotease of the ACE family, the ACE family includes somatic and germinal ACE. ACE-2 cleaves angiotensins I and II as a carboxypeptidase, ACE-2 converts angiotensin I to angiotensin 1-9, and angiotensin II to angiotensin 1-7. ACE-2 is also able to hydrolyze apelin-13 and dynorphin-13 with high efficiency. ACE-2 can be highly expressed in testis, kidney and heart, in colon, small intestine and ovary at moderate levels. Captopril and lisinopril as the classical ACE inhibitor don't inhibit ACE-2 activity. ACE-2 may play an important role in regulating the heart function.





ELK Biotechnology

SDS-PAGE



+86-27-59760950

ELKbio@ELKbiotech.com

www.elkbiotech.com

23-2, No.388 Gaoxin 2nd Road, Wuhan East Lake Hi-tech Development Zone, Hubei, P.R.C